



ADAPTATIONS IN THE MANAGEMENT OF CHILD WASTING IN THE CONTEXT OF COVID19

INTRODUCTION

[Guidance](#) issued by UNICEF, the Global Nutrition Cluster and the Global Technical Assistance Mechanism for Nutrition suggests a range of potential adaptations in the management of child wasting in outpatient facilities and/or community-based health worker platforms in the context of COVID19, including: integrated community case management plus nutrition (ICCM+Nut), modified dosages, Family MUAC, and other innovations. While many of these adaptations have been piloted or investigated in randomized trials, their more widespread application in response to this global pandemic requires specific investigation. In particular, outstanding questions remain on: which adaptations are selected in which contexts (and why), the implications of selected adaptations on program operations, nutritional outcomes, and disease transmission of COVID-19. Documenting lessons learned by partners implementing (or opting not to implement) these changes will help to inform future programming.

OBJECTIVE

Action Against Hunger, in a coordinated effort with USAID, UNICEF and the US Centers for Disease Control, seeks to systematically document, analyze, and synthesize information related to innovations and adaptations for outpatient & community-based management of child wasting in order to:

- Identify and track those adaptations being implemented during COVID19;
- Extract learning on the operational implications and program outcomes of these approaches; and,
- Facilitate uptake of this evidence to inform short- and long-term programming.

ACTIVITIES

- Track: Identify what adaptations are being implemented, where and by whom, sharing this information in real-time on the [State of Acute Malnutrition](#) website.
- Learn: Document lessons learned on the operational implications and program performance of these approaches (e.g. feasibility, caseload, workload, logistics, and sustainability) through semi-structured interviews with program implementors.
- Analyze: Develop an open-access database of programmatic data, with possibility of pooled analyses, to understand global-level outcome trends.

COLLABORATION

We invite you to showcase your work and join forces with us! Collaboration is critical to the success of this project and we offer opportunities for organizations to showcase their work through low-burden participation in this project through short surveys, interviews, and/or provision of programmatic data. If your organization is implementing adaptations in the management of child wasting to ensure safe continuity of program services, we invite you to collaborate with us and facilitate in identifying best practices for treatment of acute malnutrition.

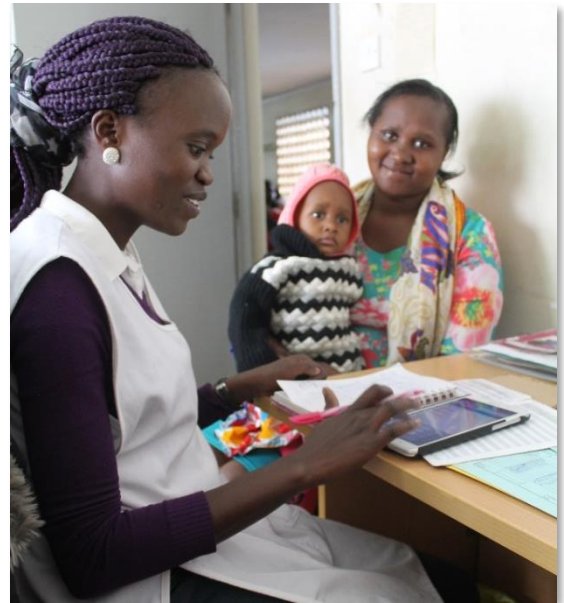


Photo: Anne Salter of Action Against Hunger UK

Please contact cmamadaptations@actionagainsthunger.org to collaborate or for more information.

This study is made possible by the generous support of the American people through the United States Agency for International Development (USAID). The contents are the responsibility of Action Against Hunger and do not necessarily reflect the views of USAID the United States Government, or UNICEF